

TEMPERATURE AND PRESSURE LIMITS

- Minimum Pressure 35kPa
- Maximum Pressure 1000kPa
- Maximum hot water Temperature 70 degrees Celsius

For cold water pressure above 600kPa we recommend the installation of a pressure limiting valve.

We recommend using a line strainer on both hot and cold supply lines to this mixer. This will help protect the ceramics in your mixer.

CLEANING

To retain the original look of your Aquatica laundry product, please follow these simple suggestions:

DO NOT use acidic, abrasive, chlorine or alcohol based cleaners. Many of these products can damage chrome and powder coated surfaces.

DO remove dirt or calcium stains with soap and water, rinse with clean water and dry with a clean soft cloth.



Aquatica NZ Ltd offer, from the date of purchase, a 5 year guarantee on the cabinet and taps and a 25 year guarantee on the laundry bowl. Aquatica NZ Ltd warrants that only high quality workmanship and materials have been used in the manufacture of the laundry tubs. The guarantee is transferable but original proof of purchase is required. If any faulty workmanship or materials are proven during the warranty period Aquatica NZ Ltd will, at its own cost, repair or, at its option, replace the faulty product. If spray or abrasive cleaners are used on the chrome and powder coated surfaces, it will void the warranty. (The chrome and cabinet should only be cleaned with mild detergent on a soft damp cloth).

Failure to use an in-line strainer or filter on the mixer may also void the warranty. Pressure limiting is recommended above 600kPa and should never exceed 1000kPa.



INSTALLATION INSTRUCTIONS

AQ LAUNDRACENTRO
AQ LAUNDRATUBBIE
AQ LAUNDRASLIM
AQ LAUNDRAMAX2

AQ LAUNDRATUBBIEPLUS
AQ LAUNDRASLIMPLUS
AQ LAUNDRAMAXSLIM2

PLUS MODEL (ie. Pull-Out Spray Mixer)

If you have a Plus model, read below. If not, ignore this section.

To prevent damage to the tap and cabinet, the pull-out spray tap is not fitted to the cabinet during transport.

The mixer should be installed before installation of the cabinet. When installing pipes and fittings, ensure they do not interfere with the pull-out spray.



DRAWER MODEL

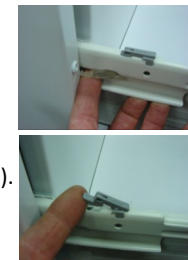
If you have a drawer model, read below. If not, ignore this section.

Drawer Removal

Drawer models require the removal of the drawers to complete the supply and waste connections. The top drawer is removed by opening fully and then lifting the drawer front upwards until the drawer runners disengage.

To remove the bottom drawer, almost fully extend the drawer and remove the clear rubber blocks from the drawer runners (pictured). Then disengage the grey lock tabs by sliding backwards, then forwards (pictured).

Now fully extend the drawers and lift the drawer front upwards until the runners disengage.



DOOR MODEL

If you have a door model and want the door to swing from the other side, read below. If not, ignore this section.

Door Reversal

- Open door and remove locking nut from top pivot pin and then unscrew pivot pin.
- Lift door off bottom pivot pin
- Remove the magnets and refit to opposite side of door frame (4 screws).
- Remove bottom pivot pin and nylon washers. Relocate pin and washers to opposite side of the door frame.
- Rotate door 180 degrees
- Relocate door basket by removing 4 x screws and repositioning brackets to the new bottom of door.
- Fit door to bottom pivot pin. Ensure the nylon washers are between the door and the frame.
- Refit top pivot pin and locking nut.
- Refit door basket to locating tabs on door brackets.



INSTALLATION

The Aquatica laundry tub has hot and cold taps on the console to supply the washing machine.

- Unpack and inspect laundry tub for shipping damage. Please advise your plumbing retailer if damage has occurred. Aquatica NZ Ltd will not be responsible for repair costs if damage is reported after installation.
- Check that the pre-plumb work is suitable for your tub.
- All models must be installed level to ensure door or drawers line up correctly. If the cabinet is out of level the drawer fronts can become staggered. Adjust feet to correct any misalignment. On the drawer model, if further adjustment is required, this can be achieved using a screwdriver on the drawer connection brackets.
- We recommend that all laundry cabinets are securely fastened to prevent movement and excessive load on plumbing connections. Drawer model cabinets must be secured to the floor or wall framing at both sides to prevent tipping forwards.
- Configure your single lever mixer depending on your water supply system.

Mains pressure hot and cold water

Does not need P.C.W.

Can leave flow guide (max flow) in mixer or swap to P.C.A. (8 litres/min)

Low pressure hot and cold water

Fit as supplied. May fit aerator but will reduce the flow of water.

Low pressure hot and mains pressure cold water-

Leave flow guide in place. Must fit P.C.W. to prevent high pressure cold water back-flowing into the low pressure hot water line.

- With the cabinet secured, connect the hot and cold water inlets at the wall to the bottom end of the 1/2" BSP brass T fittings (using standard plumbing fittings).
- Connect washing machine hot and cold hoses to the 20mm flexi tail outlets (red - hot / blue - cold).
- Connect waste outlet to household plumbing via trap (trap not supplied).
- Insert discharge hose from washing machine directly into the inlet on the cabinet side. Secure in place using the cable tie provided. Cabinet washing machine inlet fitting can be reversed to the opposite side of the cabinet if required.
- Turn household water supply on and test to ensure that all connections are watertight.

BACK VIEW OF CABINET

This shows the open area at the rear of the tub to allow for positioning of the water inlets and waste water outlet.

Suggested height for water outlets ~600mm up from the floor (centered around the tap).

Suitable for P and S traps.

Trap attachment height ~ 460mm up from the floor.

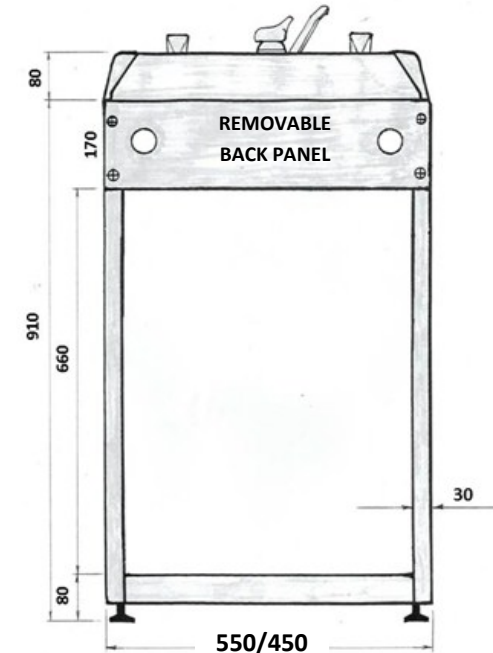
Floor area required to fit laundry tub:

Standard: Width: 560mm
 Depth: 570mm

Slim: Width: 460mm
 Depth: 660mm

Notes:

1. Not recommended to have waste pipe within 50mm of plug centre line as this will make waste connections more difficult.
2. Bracing on base of the cabinet extends in 40mm from each side and 70mm in from front and rear.
3. Height dimensions will vary a bit depending on the adjustment of the leveling feet.
4. On drawer models, drawer to floor and drawer to rear wall gap is at least 120mm to allow for plumbing connections.



If you require any additional assistance, please contact :
Aquatica NZ Ltd, P O Box 19146, Avondale, Auckland.

Phone: (09) 828 2068 Fax: (09) 828 2069

Email: info@aquatica.co.nz

 aquatica